

e-Diagnostics/e-Manufacturing Seminar Conclusion

Harvey Wohlwend

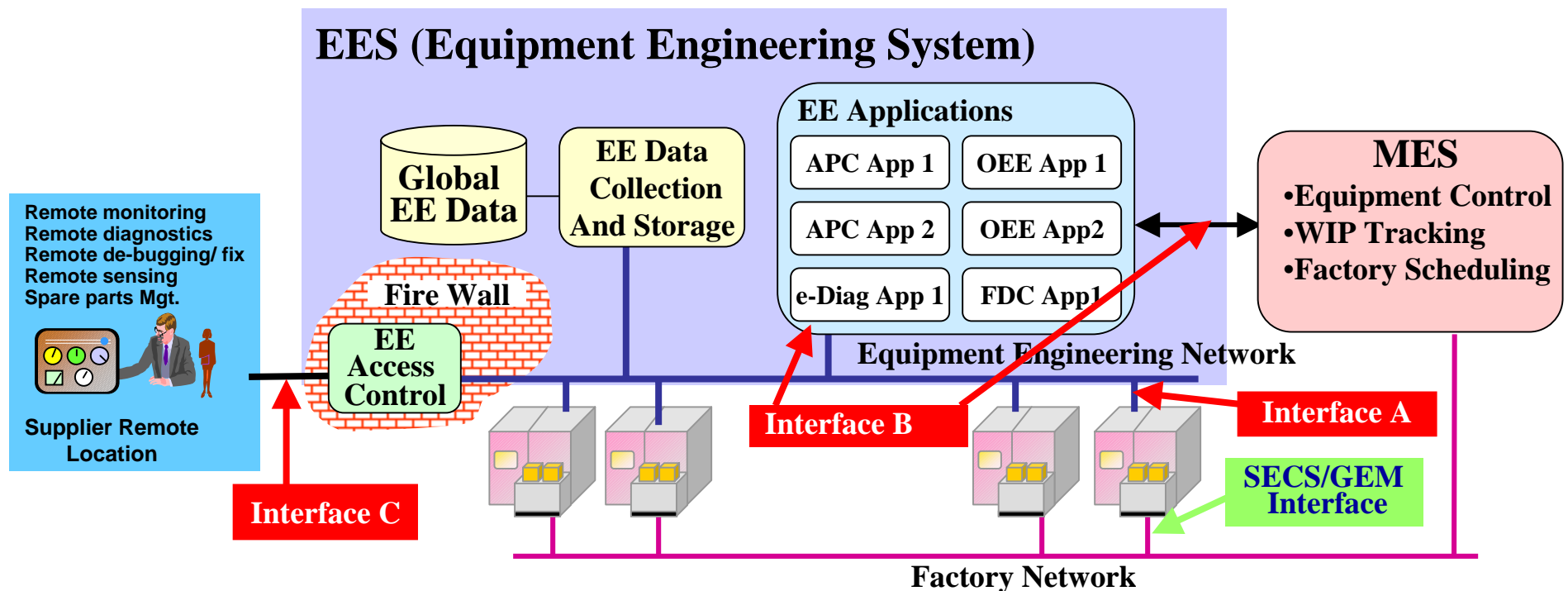
International SEMATECH



SEMI
EDUCATION

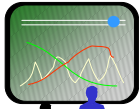
The Three Interfaces

- Analyze the data, protocol, and security requirements for support of the Equipment Interface (Interface A)
- Analyze the data, protocol, and security requirements for open EEC Application Interfaces (Interface B)
- Analyze the data and protocol requirements for external access to EEC implementations (Interface C)



An e-Manufacturing Vision

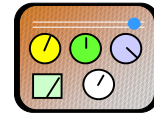
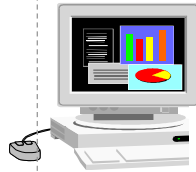
Linkages to/from Enterprise systems & suppliers



For Planners/Schedulers

- Enterprise interfaces
- Finance interfaces
- Materials interfaces
- Warehousing Interfaces

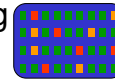
Summary Data & Analysis



Senior mgr. Cockpit

For Mangers

- Productivity Status
- Yield, Engineering
- Capacity planning
- Output Schedule
- Performance



Drill-down data



For Engineers/Technicians

- Equipment performance
- Inventory management
- Remote diagnostics
- Equip/Process excursion management

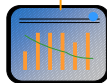
Tools enabling linkages to/from enterprise systems, suppliers, and the network

Tools to monitor commitments of output, cost, agility, and on-time delivery of products ...

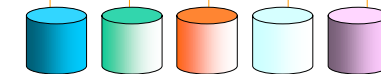
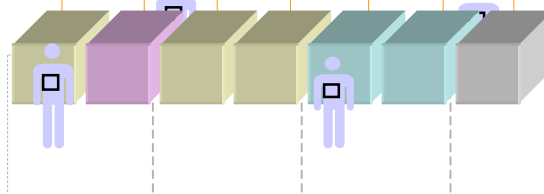
Tools to manage factory assets effectively ...

firewall

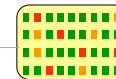
Reliable & Consistent Information - agreed to data, any time, anywhere,



- Single one-stop shop
- User interface personalized to the end-user



- Consolidated databases, datamarts
- Data mining tools, Applications

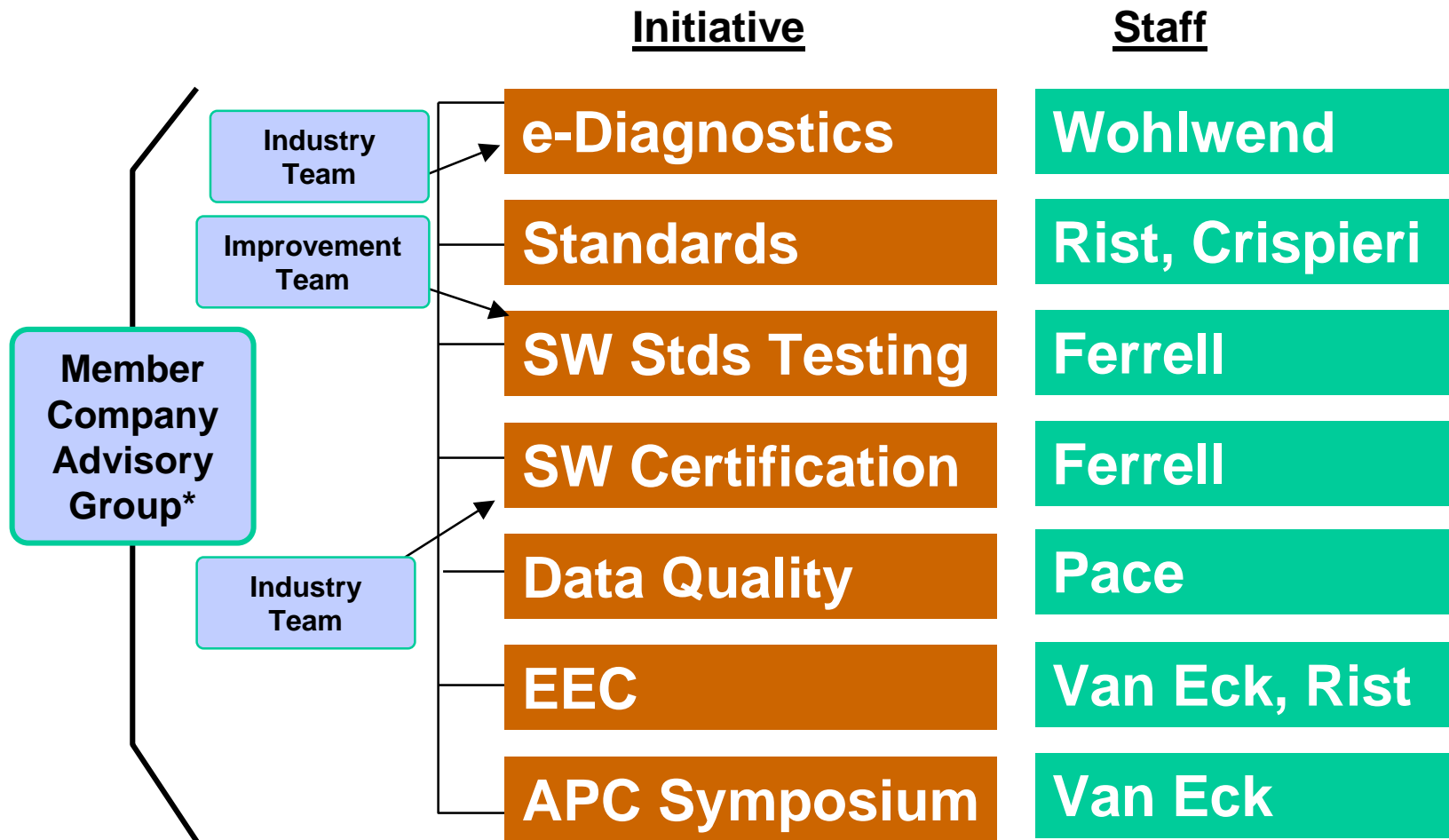


- Equipment
- Sensors
- Metrology
- WIP
- Process



- Remote diagnostics
- Remote monitoring
- Remote de-bugging/fix

ISMT e-Manufacturing Program



* General e-Manufacturing oversight providing resources to guide and direct teams

For further information please contact:
Harvey.Wohlwend@sematech.org

Wohlwend - SEMICON Europa 2002 - Slide 4